

Fox Hall - *Part 12*, Second-Floor Plan

By Dick Gresham

The floor plan presented here represents the second floor of Fox Hall as it now stands (Fig. 1, Fox Hall second-floor plan). It is current as of 9 October 2020, based on what the restoration team has ascertained through study of Fox Hall and the actual restoration work the team has undertaken thus far in the project. The restoration project at Fox Hall is ongoing, and this floor plan is subject to revisions as new evidence is discovered and additional restoration projects are undertaken.

A detailed assessment of the second floor of Fox Hall has been made and is discussed in *Part 11*, recently published on this website. You are encouraged to read Fox Hall - *Part 11*, Second-Floor Assessment for context. This floor plan is intended to accompany this published article and those to follow in this series on Fox Hall.

The two closets, denoted "CL." on the drawing, are circa 1900, Roper period, additions.

Figure 1 has been reduced from a full-size architectural drawing of roughly 35" x 24" to fit into this article. For better viewing, simply zoom in on your computer.

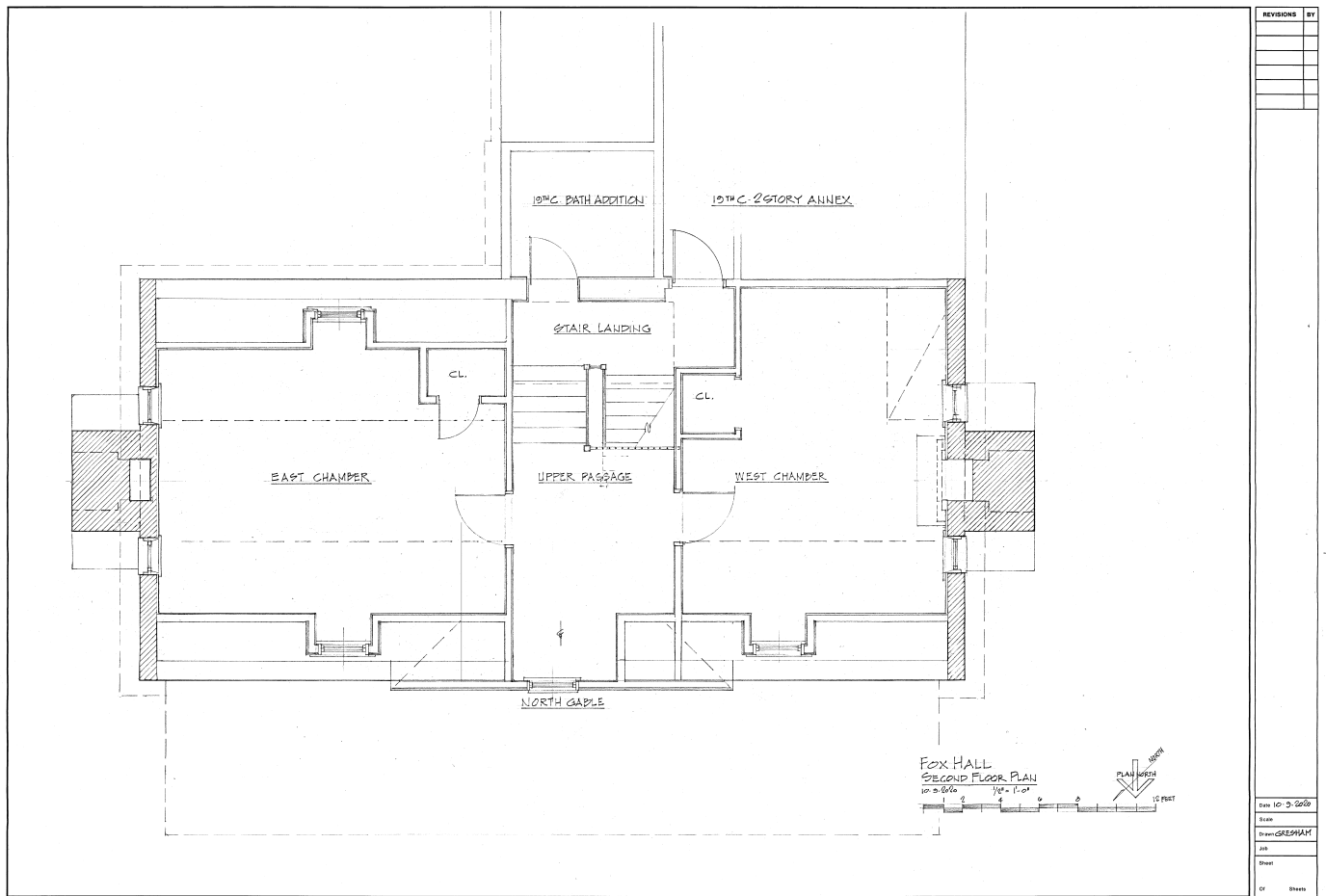


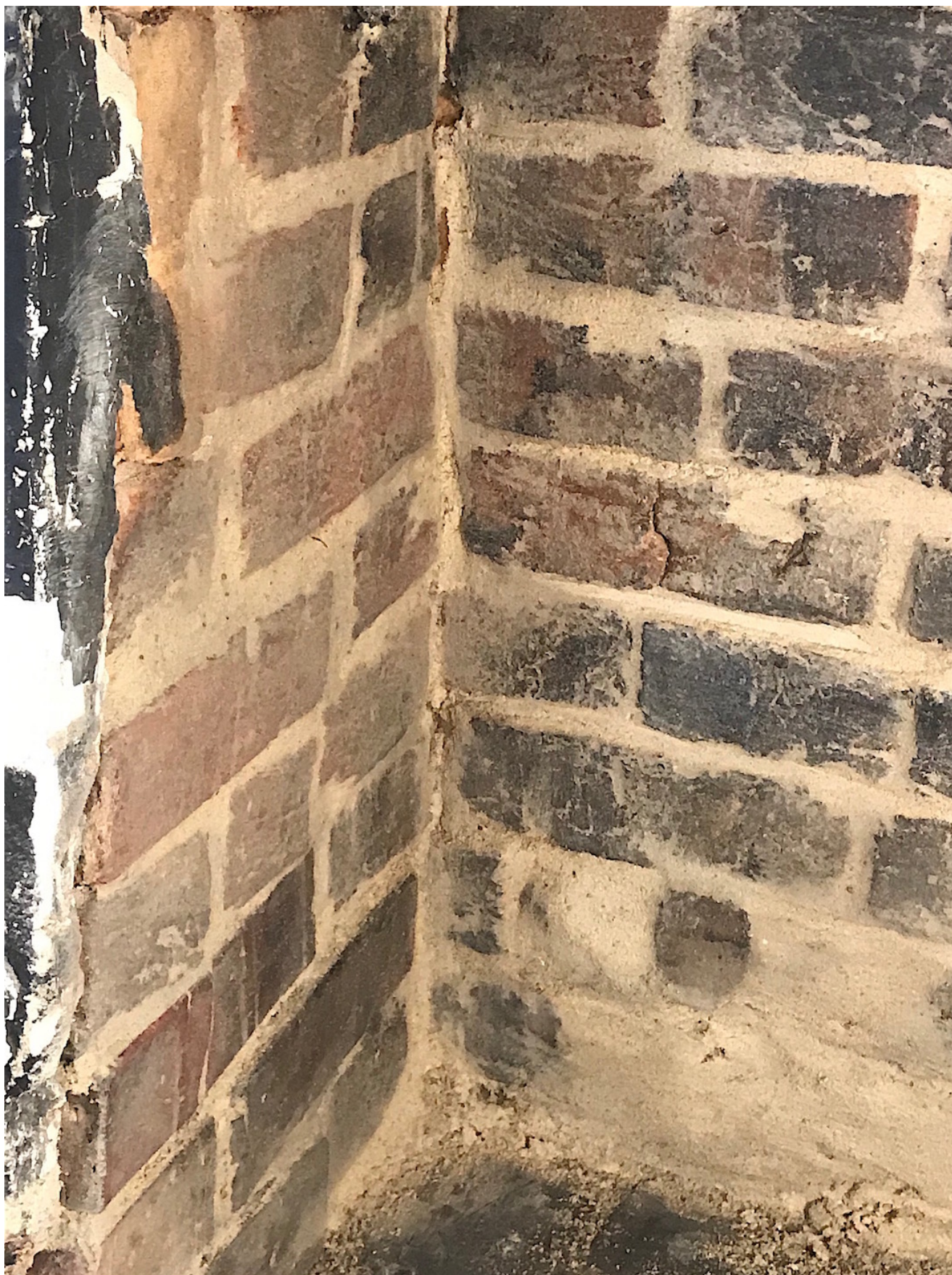
Figure 1

Update

Needed tuck pointing in the fireplace in the west chamber, as noted in Fox Hall - *Part 11*, Second-Floor Assessment, has been completed. Hydraulic lime mortar and local sand was used in this repair work.



Fireplace before repair



Fireplace after tuck pointing